

International Association for Indigenous Aging



IA²

IA² Our Vision

Improving the health and well-being of American Indians, Alaska Natives and other indigenous people as they move through the aging spectrum.



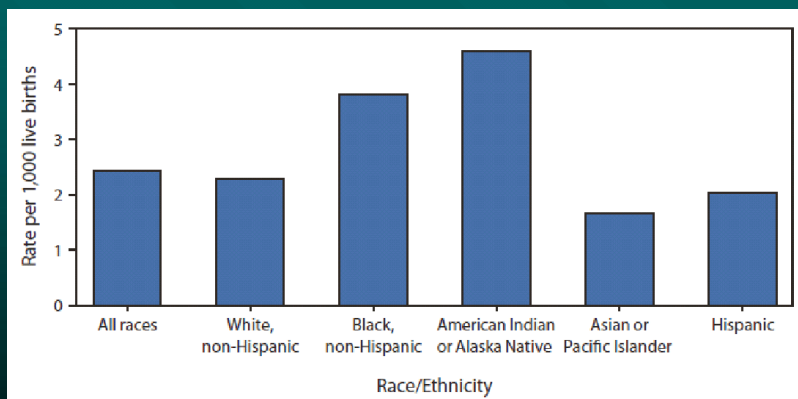
SUID is a Major Health Disparity

- American Indian and Alaska Native Babies post- neonatal infant death rate is 2.49 times higher than the white infant death rate (1999-2009).

SIDS is the second leading cause of infant deaths among AI/AN and the rate is 2.4 times higher than among whites (199-2009).

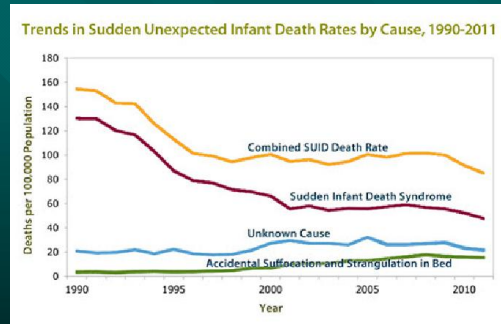
Rates are highest in northern Tribes and Alaska.

SUID mortality rates



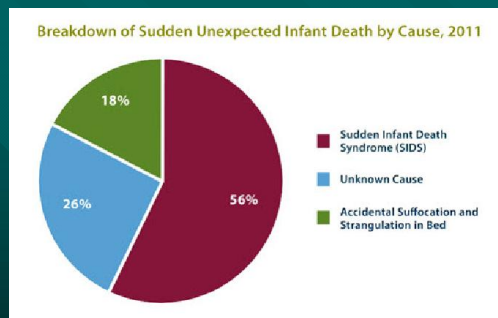
CDC TERM MORTALITY RATES 2007

Causes of SUID



SOURCE: CDC/NCHS, National Vital Statistics System, Compressed Mortality File.

SUID chart



SOURCE: CDC/NCHS, National Vital Statistics System, Compressed Mortality File.

In 2011, the majority of SUID cases (56%) were categorized as sudden infant death syndrome, followed by unknown cause (26%), and accidental suffocation and strangulation in bed (18%)

Native Cultural Values

- Elders

- Veterans



- Children

- Extended Families

Native Values re: Death

- Integrity of Remains

- No cremation

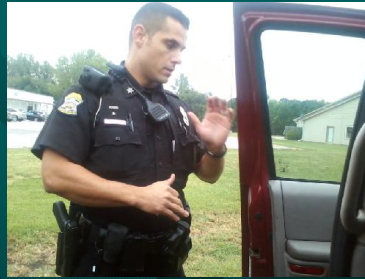
- No Autopsy

- Same-day burial



Initial SUID Investigation

- Patrol Officer
- Detective



Other first responders



- EMS
- Fire Department
- Neighbors

Could be valuable sources of info.

Initial investigation barriers

- Grief
- Mistrust of law enforcement
- Impaired memory
- Guilt

Parents should cooperate to . . .

- Help the family find closure.
- Learn, so it doesn't happen again.
- Help us understand so we can help other parents avoid tragedy.

Coming Up

- What makes an infant death scene different and difficult?
- What are key components of a high quality investigation?



Thank you!

**Dave Baldrige
International Assn. for
Indigenous Aging**

dave@iasquared.org

505/980-5461

505/239-4793